

## GROUND FLOOR APARTMENT WITH 2 BEDROOMS

📍 Fuengirola

REF# R5413690 – 270.000€

Community

11520 €/YEAR



2  
Beds



1  
Baths



78 m<sup>2</sup>  
Built

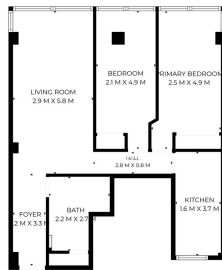
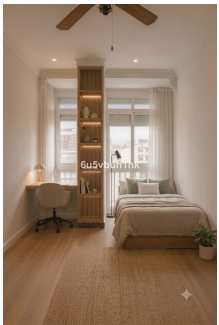
Unique investment opportunity on the beachfront in Fuengirola We present this exceptional apartment located in one of the most emblematic and renowned buildings on the Fuengirola seafront promenade, a privileged location that combines the value of beachfront living with the convenience of having all amenities just steps away. The property currently has two bedrooms and one bathroom, offering a superb foundation for a complete renovation project to create a modern, functional home perfectly suited to current market

VILLA ONE Luxury Homes **T** | +34 687 83 44 03 **E** | info@villaone.es **W** | villaone.es

**D** | Avda. Ricardo Soriano, 72, Edif. Golden B, 1ª Planta, (29601) Marbella, Málaga, España.

demands. Although the apartment overlooks the quiet Castillo Street, it enjoys all the advantages of being right on the seafront promenade, just steps from the sand and the sea. This is a feature especially valued by those seeking a beachfront residence without sacrificing privacy and tranquility. Its exceptional location makes it an ideal choice for investors seeking high demand for holiday or long-term rentals, as well as for those looking to create their own second home on the Costa del Sol, enjoying over 300 days of sunshine a year and a wide range of dining, shopping, and leisure options. Few opportunities exist to acquire a property for renovation in such a well-established and sought-after location, with enormous potential for appreciation and the possibility of designing a bespoke home in one of Fuengirola's most desirable areas. A property with location, potential, and future growth. A secure investment in the heart of the Malaga coast. The last photos correspond to a simulation of a renovation, leaving a kitchen open to the living room and placing the bathroom at the end of the house along with a laundry room.





SIZE IS APPROXIMATE, ACTUAL MAY VARY.

