

## RESIDENTIAL PLOT WITH BEDROOMS

📍 Benalmadena Costa

REF# R5347486 – 550.000€



Beds



Baths



186 m<sup>2</sup>

Built



25600 m<sup>2</sup>

Plot

**EXCLUSIVE INVESTMENT – 50% UNDIVIDED SHARE OF A 26,000 m<sup>2</sup> PLOT WITH SEA VIEWS IN BENALMÁDENA** Sale of a 50% undivided share of a set of four plots with an existing house and open sea views. This real estate asset with strong appreciation potential is located in the municipality of Benalmádena, in the La Viñuela area, one of the natural zones with the highest urban development potential on the Costa del Sol. **MAIN PROPERTY DATA** • Total land area: approximately 26,262 m<sup>2</sup> according to Land Registry • Measured area: approximately 25,602 m<sup>2</sup> • Number of plots: 4 registered plots • Urban classification: Non-Sectorized Developable Land (SUNS) • Existing two-storey house with 128 m<sup>2</sup> of usable space, plus terrace, basement, storage room and parking for 4 cars with first occupancy license (LPO). • Elevated location with open views to the sea and surrounding landscape **PRICE €550,000 for 50% ownership.** This price is significantly below the potential value of the asset, offering an attractive entry

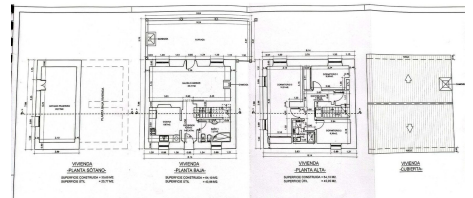
VILLA ONE Luxury Homes **T** | +34 687 83 44 03 **E** | info@villaone.es **W** | villaone.es

**D** | Avda. Ricardo Soriano, 72, Edif. Golden B, 1<sup>a</sup> Planta, (29601) Marbella, Málaga, España.

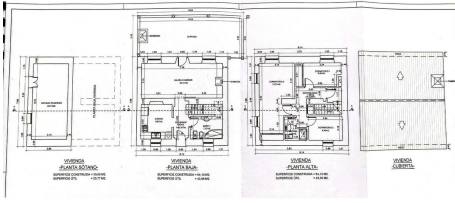
opportunity into developable land in one of the most dynamic real estate markets on the Costa del Sol. **DEVELOPMENT POTENTIAL** The land is classified as non-sectorized developable land, which represents a strategic reserve for the future urban growth of the municipality. Possible investment strategies include: • Urban development through a Sectorization Plan • Development of a residential project with detached villas • Integration into future municipal urban developments • Medium- to long-term land banking strategy **INVESTOR PROFILE** This asset is particularly suitable for property developers, real estate investment funds, family offices and value-add investors. **ADDITIONAL INFORMATION** The transaction is structured as the sale of a 50% undivided ownership share. Full legal, registry and urban planning documentation is available for investor review. Request the complete investment dossier.







Escamada con Certificación



Escaneado con CamScanner