



TOWNHOUSE WITH 5 BEDROOMS

📍 Artola

REF# R5072410 – 595.000€

IBI

1000 €/YEAR

Garbage

190 €/YEAR

Community

1524 €/YEAR



5
Beds



4
Baths



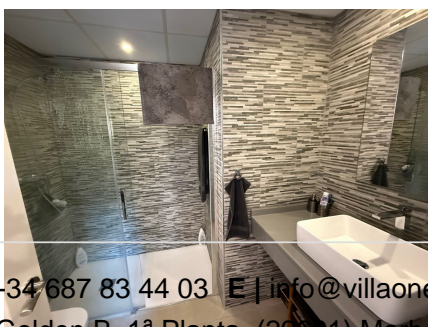
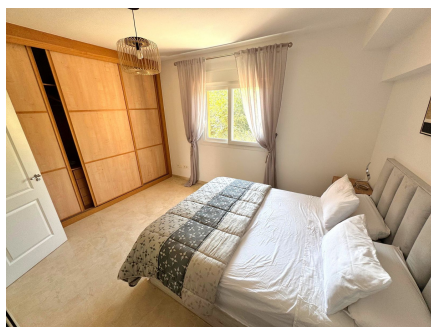
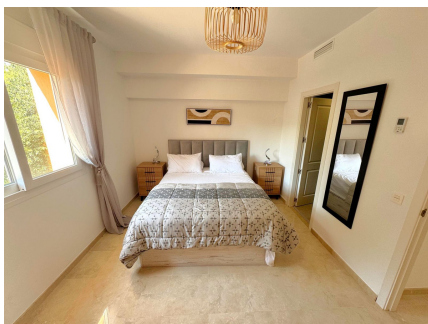
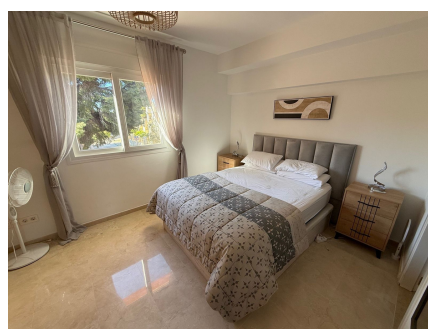
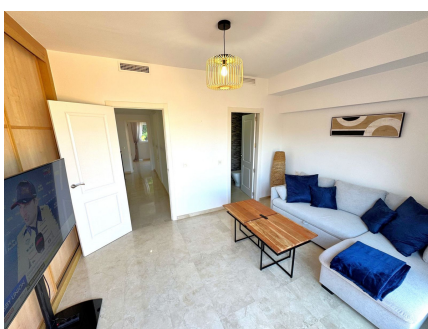
178 m²
Built



50 m²
Terrace

Opportunity! Prime location in the sought-after Artola Alta area, directly overlooking Cabopino Golf and only a 12-minute walk (approx. 900 meters) to the beautiful Cabopino's Beach and the Cabopino Marina. This townhouse is ideal for families, golf lovers, or those seeking a high-end holiday home in one of Marbella's most tranquil and green areas, just steps from the beach. Private Garage - With direct access to the property. Peaceful Yet Connected - Quiet residential setting with easy access to the AP-7, international VILLA ONE Luxury Homes **T** | +34 687 83 44 03 **E** | info@villaone.es **W** | villaone.es **D** | Avda. Ricardo Soriano, 72, Edif. Golden B, 1ª Planta, (29601) Marbella, Málaga, España.

schools, public transport, and all amenities. Artola Alta Why choose the area? You have a winning combination: sea, golf, nature and comfort in a premium location. Perfect both for year-round living and exclusive holidays. Authentic ambience without the urbanistic excesses of other areas of the Costa del Sol. Cabopino Marina Very close to Artola Alta, with approximately 169 moorings and a pleasant area with bars, restaurants and nautical activities. It offers a quiet and pleasant atmosphere, ideal both during the day and at sunset. Cabopino Golf 18-hole golf club designed by Juan Ligués Creus, combining par-3, par-4 and par-5 with lakes, curious pine trees and spectacular views of the Mediterranean Sea. The third hole is particularly celebrated: a par-4 from an elevated tee at a height of 80 m, protected by bunkers, with breathtaking views. Located in Artola Alta, just a few minutes' walk from the beach and the port, it offers a well-kept environment and a welcoming clubhouse.





TOTAL SUP. M²
1. PLANTA: 73 M², 2. PLANTA: 73 M², 3. PLANTA: 73 M², 4. PLANTA: 8 M²
ÁREAS EXCLUIDAS: GARAJE: 35 M², REPOSICIONADO 17 M², BALCON: 17 M²
PISCINA: 27 M²



TOTAL SUP. M²
1. PLANTA: 73 M², 2. PLANTA: 73 M², 3. PLANTA: 73 M², 4. PLANTA: 8 M²
ÁREAS EXCLUIDAS: GARAJE: 35 M², REPOSICIONADO 17 M², BALCON: 17 M²
PISCINA: 27 M²