



## TOWNHOUSE WITH 4 BEDROOMS

📍 Casares Playa

REF# R5023186 – 880.000€

IBI

864 €/YEAR

Community

1440 €/YEAR



4  
Beds



4  
Baths



153 m<sup>2</sup>  
Built



32 m<sup>2</sup>  
Plot



25 m<sup>2</sup>  
Terrace

Wonderful beachfront townhouse in Casares Costa! This exclusive property is located within a quiet and private residential complex featuring spacious green areas, a communal pool, and direct access to the stunning sandy beaches of Casares. It also connects to the extensive promenade that runs along the Costa del Sol, offering a wide variety of bars, beach clubs, and leisure areas. Ideally situated between Estepona and La Duquesa marinas, just a 4-minute drive or a pleasant walk away, the townhouse enjoys a south-

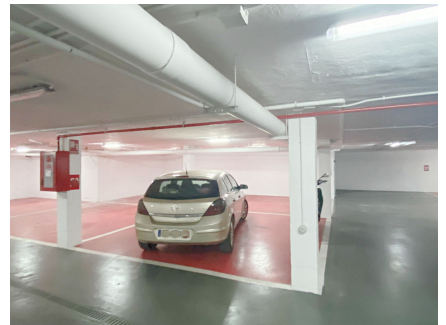
VILLA ONE Luxury Homes **T** | +34 687 83 44 03 **E** | info@villaone.es **W** | villaone.es

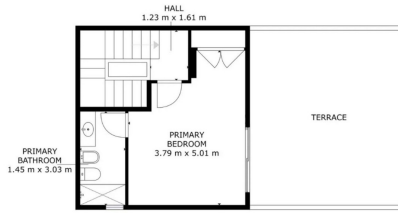
**D** | Avda. Ricardo Soriano, 72, Edif. Golden B, 1ª Planta, (29601) Marbella, Málaga, España.

facing orientation and breathtaking sea views from every room. The home is distributed across three levels. The main floor features a bright and spacious living room with large windows that open onto a private terrace, located right in front of the sea, just steps from the beach and beach bar. On the first floor, there are three generously sized bedrooms and two bathrooms, one of them en-suite, all with open views of the Mediterranean. The top floor offers a fourth bedroom with complete privacy and access to a large solarium terrace with panoramic views over the entire coastline. This property is ideal both as a permanent residence and as an investment, thanks to its strong rental potential for both holiday and long-term lets. It also includes an underground parking space for added convenience. A unique opportunity to enjoy the peace of living by the sea with all amenities nearby, without the need for a car. Viewing is highly recommended to truly appreciate all that this dream home has to offer.



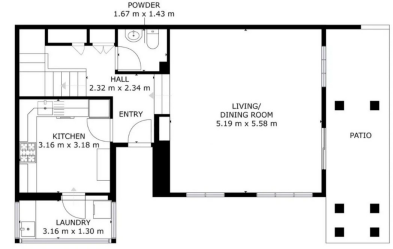






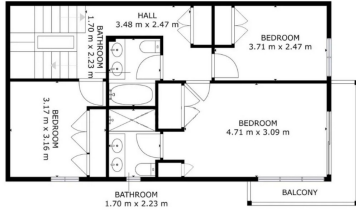
GROSS INTERNAL AREA  
FLOOR 1: 15.61 m<sup>2</sup>, FLOOR 2: 22.01 m<sup>2</sup>, FLOOR 3: 30 m<sup>2</sup>  
TOTAL: 67.62 m<sup>2</sup>

Matterpc



GROSS INTERNAL AREA  
FLOOR 1: 59 m<sup>2</sup>, FLOOR 2: 18 m<sup>2</sup>, FLOOR 3: 30 m<sup>2</sup>  
TOTAL: 107 m<sup>2</sup>

Matterpoi



GROSS INTERNAL AREA  
FLOOR 1: 59 m<sup>2</sup>, FLOOR 2: 29 m<sup>2</sup>, FLOOR 3: 30 m<sup>2</sup>  
TOTAL: 118 m<sup>2</sup>

Matter