



PENTHOUSE DUPLEX WITH 2 BEDROOMS

📍 Elviria

REF# R4890817 – 375.000€



2
Beds



2
Baths



121 m²
Built

BEAUTIFUL PENTHOUSE DUPLEX WITH PANORAMIC SEA VIEWS IN ELVIRIA

Discover this exceptional 2-bedroom, 2-bathroom penthouse duplex located in a peaceful urbanisation in upper Elviria. This property combines modern comfort with breathtaking views, offering a perfect retreat on the Costa del Sol.

The highlight of this penthouse is the expansive wrap-around terrace on the main floor, where you can enjoy panoramic vistas, including stunning sea views. Whether relaxing, dining al fresco, or entertaining,

this terrace provides a spectacular outdoor living experience.

Inside, the penthouse features a bright and spacious layout with well-appointed rooms.

The property includes a private space in an underground garage and a large storage room, adding convenience and practicality.

Situated just a short drive from Marbella and all local amenities, this penthouse offers the perfect balance of tranquility and accessibility. Whether as a permanent residence, a holiday home, or an investment, this is a unique opportunity to own a piece of paradise in Elviria.

Don't miss this incredible opportunity—contact us today to schedule your visit and experience this stunning penthouse duplex in Elviria for yourself!

Penthouse Duplex, Elviria, Costa del Sol.

2 Bedrooms, 2 Bathrooms, Built 121 m².

Setting : Village, Close To Golf, Close To Shops, Close To Sea, Urbanisation.

Orientation : East, South, West.

Condition : Good.

Pool : Communal.

Climate Control : Air Conditioning, Hot A/C, Cold A/C.

Views : Sea, Mountain, Panoramic, Garden, Urban.

Features : Covered Terrace, Lift, Fitted Wardrobes, Near Transport, Private Terrace, Storage Room, Utility Room, Ensuite Bathroom.

Furniture : Fully Furnished.

Kitchen : Fully Fitted.

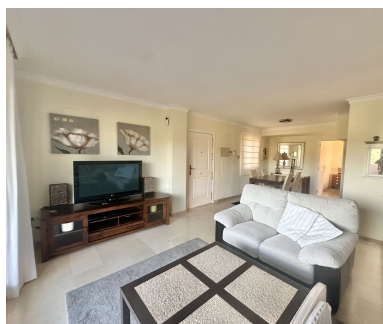
Garden : Communal.

Security : Gated Complex.

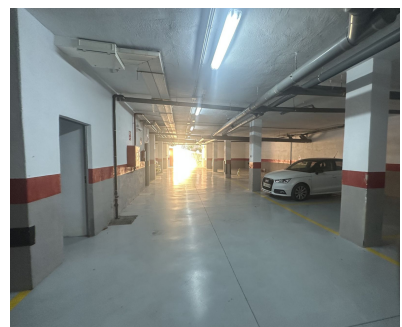
Parking : Underground, Garage, Covered, Private.

Utilities : Electricity.

Category : Holiday Homes, Investment, Reduced.









Approximately 14 m² total



Approximately 41 m² total



Approximately 33 m² total

