



TOWNHOUSE WITH 4 BEDROOMS

📍 Ardales

REF# R4826716 – 420.000€

IBI

745 €/YEAR



4
Beds



3
Baths



706 m²
Built



860 m²
Plot

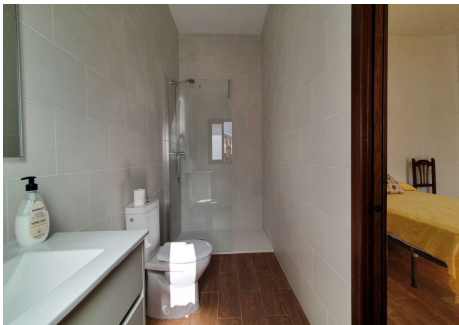
Located in the very centre of Ardales, this magnificent property offers enormous potential, whether you're looking for a spacious family home or a project to develop a B&B or boutique hotel. Just steps away from the town hall and local shops, this 700m² house stands out for its traditional charm and endless possibilities. The house currently features 4 bedrooms and 3 bathrooms, but its layout allows for the creation of several additional rooms, including the possibility of an independent apartment on the top floor. The property has

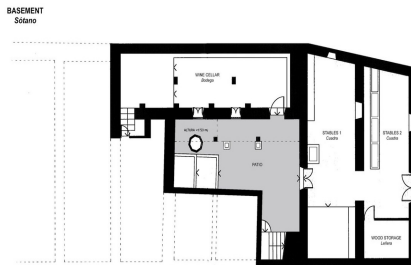
VILLA ONE Luxury Homes **T** | +34 687 83 44 03 **E** | info@villaone.es **W** | villaone.es

D | Avda. Ricardo Soriano, 72, Edif. Golden B, 1^a Planta, (29601) Marbella, Málaga, España.

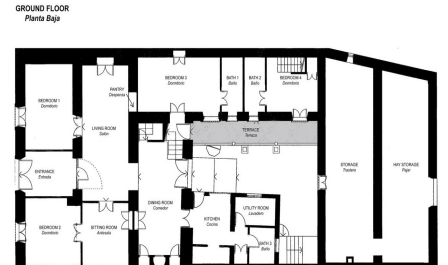
undergone partial renovations while maintaining its original character with thick walls, clay hydraulic floors, high beamed ceilings, and traditional wooden doors. Two of the bedrooms have been refurbished and include en-suite bathrooms and built-in wardrobes. At the heart of the house is a charming Andalusian patio that not only fills the rooms with light but also provides access to the pool area and a private orchard, ideal for creating a beautiful garden. The property also features an old stable that could be converted into bedrooms or common areas. On the top floor, there is a spacious, open-plan attic, the former hayloft, offering the potential for more rooms and access to a terrace with spectacular views of the valley and the village. If you are looking for a large property or a business project in a tourist town like Ardales, known for the Caminito del Rey and the Gaitanes Natural Park, this house offers endless possibilities.



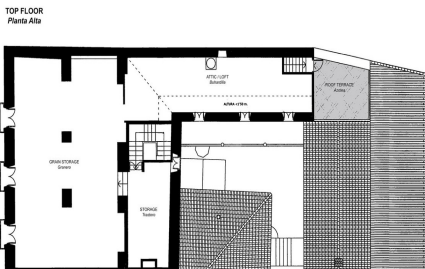




This is a representation of the layout of the property and it is not to scale.
Esta es una representación de la distribución de la propiedad y no está a escala.



This is a representation of the layout of the property and it is not to scale.
Esta es una representación de la distribución de la propiedad y no está a escala.



This is a representation of the layout of the property and it is not to scale.
Esta es una representación de la distribución de la propiedad y no está a escala.