



FINCA - CORTIJO WITH 5 BEDROOMS

📍 Alhaurín el Grande

REF# R4787884 – 699.000€

IBI

1052 €/YEAR

Garbage

84 €/YEAR



5
Beds



5
Baths



505 m²
Built



13559 m²
Plot



12 m²
Terrace

This impressive country estate is a haven of tranquillity and elegance, set on a sprawling 13,000m² plot with outstanding views that will captivate your soul. This property could be an equestrian's dream, offering

ample space for horses and outdoor pursuits.

The main house, a masterpiece of design and comfort, boasts five bedrooms, four of which are en-suite, providing ultimate privacy and convenience. The heart of the home is the double-height lounge, an expansive and inviting space perfect for both relaxation and entertaining. Overlooking this area is a charming mezzanine, adding a touch of architectural flair. The fully fitted kitchen is a chef's delight, complemented by a separate utility room and a pantry, ensuring ample storage and functionality.

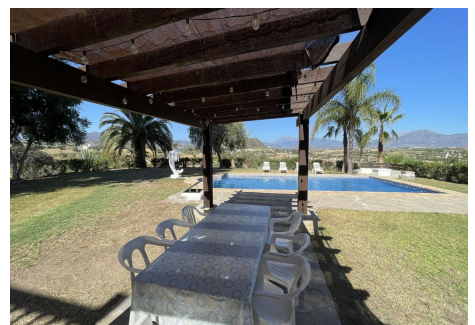
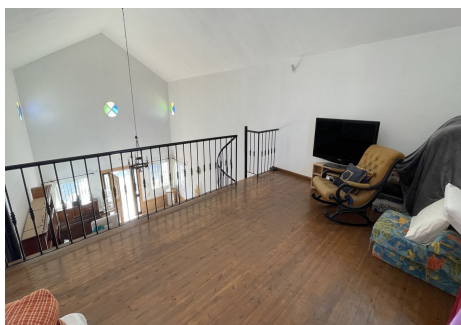
Descend to the basement, where you'll find over 200m² of versatile open space with vehicle access and natural light. This area is perfect for a workshop, garage, or additional living space, tailored to your needs.

In addition to the main house, the property includes an old house of 63m², awaiting your vision to transform it into a guest house or studio. There's also a barn of 270m², in a ruined state, presenting a unique restoration project with endless possibilities.

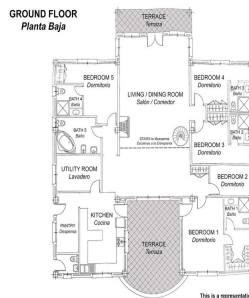
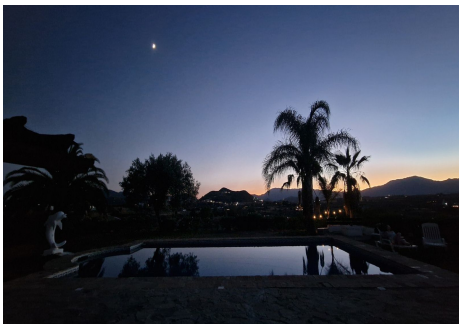
The outdoor space is equally impressive, featuring a refreshing pool where you can unwind while taking in the breathtaking surroundings. The views from every angle of this property are simply stunning, making every moment spent here a picturesque experience.

Located just a 10-minute drive from Alhaurín el Grande, the property offers the perfect balance of seclusion and convenience. Accessible via a well-maintained country road, you're never far from the amenities and charm of this vibrant town.

For those seeking even more space, a separate plot of 12,000m² is available for purchase, priced at an additional €50,000. This extra land provides further opportunities to expand your dream estate.







This is a representation of the layout of the property and it is not to scale.
Esta es una representación de la distribución de la propiedad y no está a escala.