



## SEMI-DETACHED HOUSE WITH 6 BEDROOMS

📍 The Golden Mile

**REF# R4783072 – 1.600.000€**

IBI

1700 €/YEAR

Garbage

90 €/YEAR

Community

6240 €/YEAR



6  
Beds



4.5  
Baths



235 m<sup>2</sup>  
Built



122 m<sup>2</sup>  
Plot



55 m<sup>2</sup>  
Terrace

Live your best life in Marbella's Golden Mile

Just 100 meters from the world-famous Marbella Club Hotel and 400 meters from the beach, this Semi-Villa

is situated in the heart of Marbella's luxurious Golden Mile. Step outside your door to indulge in the opulence of Puente Romano's Michelin-star restaurants, world-class tennis courts, and Marbella's sandy beaches.

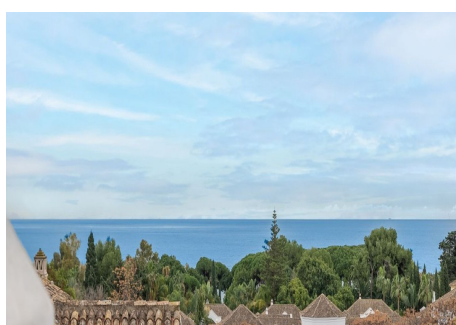
Marbella's most renowned Michelin-starred seafood restaurant is just 50 meters away, with other Dani García establishments within walking distance. The villa is also conveniently located within a five-minute drive of Puerto Banus and Marbella's Old Town.

Nestled in a small community with expansive grounds, this five bedroom + bonus room, Semi-Villa features a double-length swimming pool, a paddle court, and stunning views of both the sea to the south and La Concha mountain to the north. Inside, you'll find marble floors, central air conditioning and heating, a high bar, and a terrace perfect for entertaining guests.

The property includes two underground parking spaces and a storage room. Golf enthusiasts will appreciate being within a ten-minute drive of three of Costa del Sol's best golf clubs: Aloha, Las Brisas, and Los Naranjos. Additionally, the British International School of Marbella is just four minutes away.





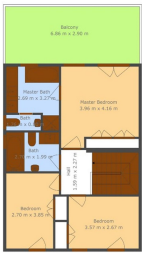




TOTAL 281 m<sup>2</sup>  
Neto Covered: 274.20 m<sup>2</sup> (100% of the plot) 0.00 m<sup>2</sup> 0.00 m<sup>2</sup>  
INCLUDED AREA: COVERED (274.20 m<sup>2</sup>) - TOTAL (274.20 m<sup>2</sup>) - P+0  
MCC/001/27.02



TOTAL 281 m<sup>2</sup>  
Neto Covered: 274.20 m<sup>2</sup> (100% of the plot) 0.00 m<sup>2</sup> 0.00 m<sup>2</sup>  
INCLUDED AREA: COVERED (274.20 m<sup>2</sup>) - TOTAL (274.20 m<sup>2</sup>) - P+0  
MCC/001/27.02



TOTAL 281 m<sup>2</sup>  
Neto Covered: 274.20 m<sup>2</sup> (100% of the plot) 0.00 m<sup>2</sup> 0.00 m<sup>2</sup>  
INCLUDED AREA: COVERED (274.20 m<sup>2</sup>) - TOTAL (274.20 m<sup>2</sup>) - P+0  
MCC/001/27.02