

## MIDDLE FLOOR APARTMENT WITH 2 BEDROOMS

📍 Casares

REF# R4778614 – 335.200€



2  
Beds



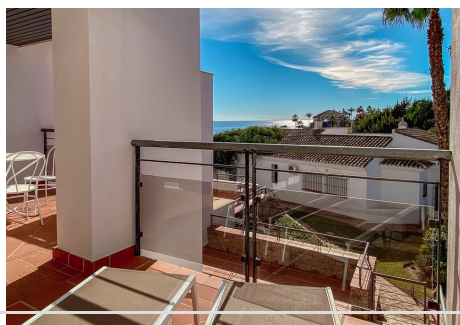
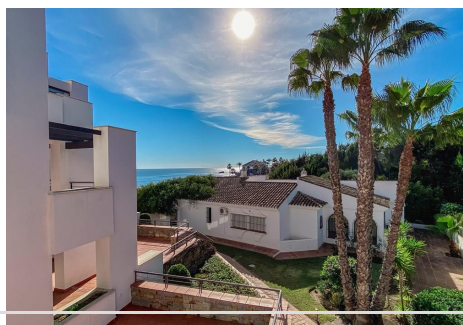
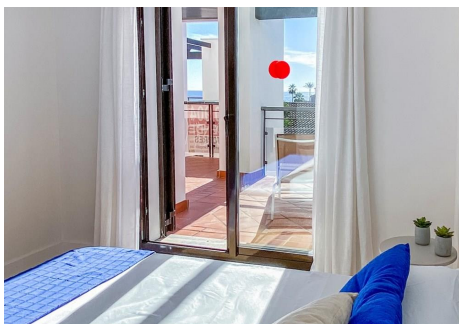
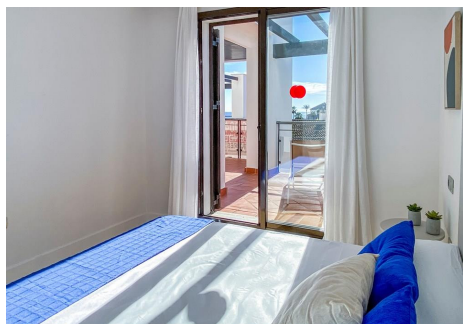
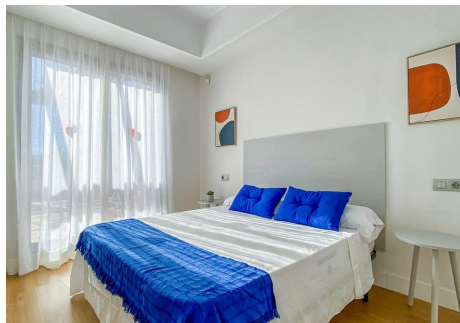
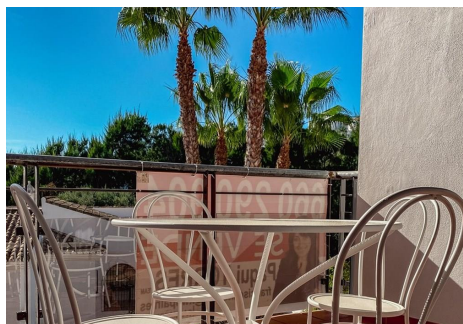
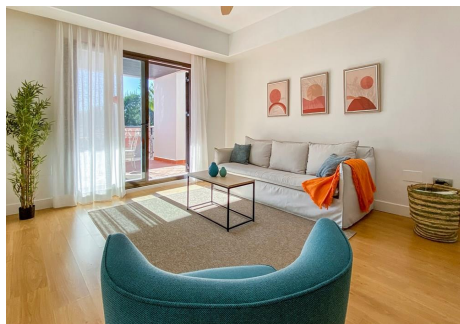
2  
Baths

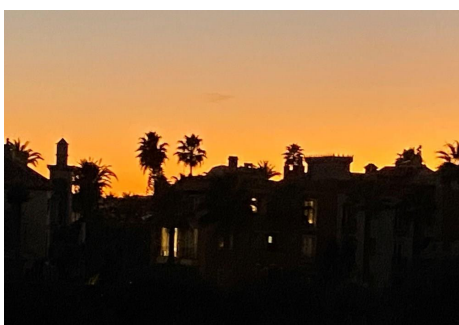
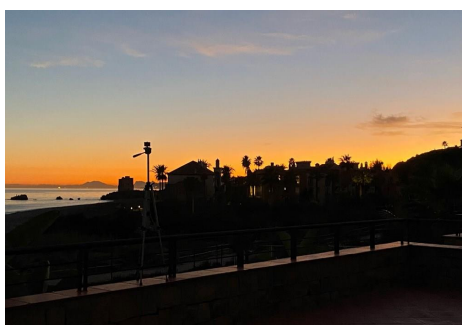
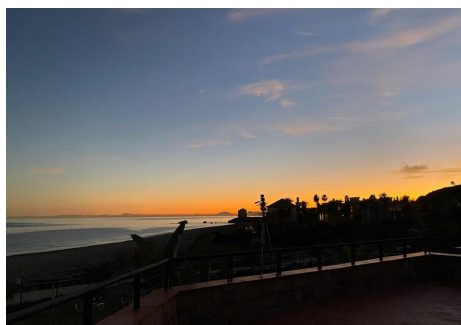
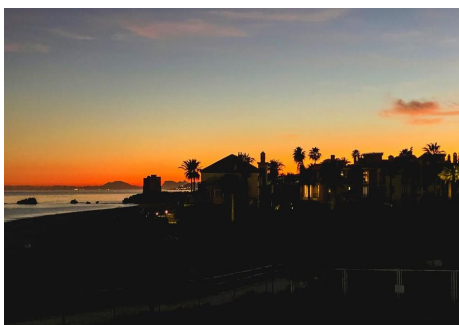
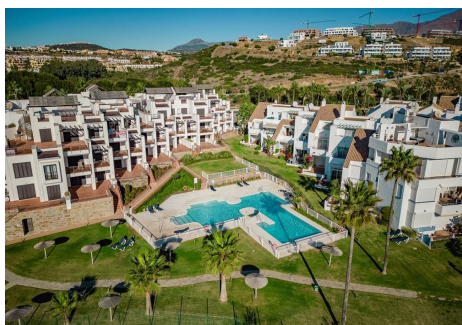
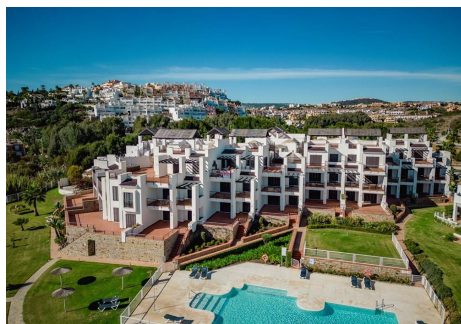
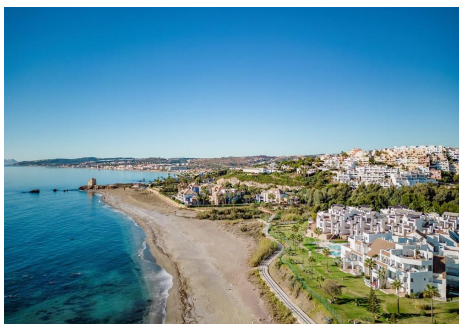
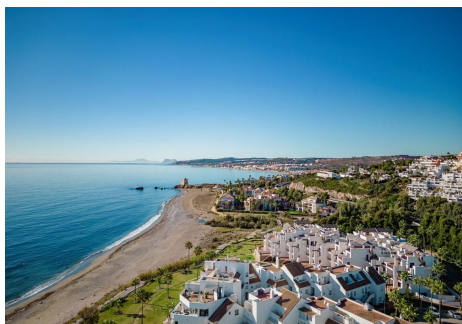
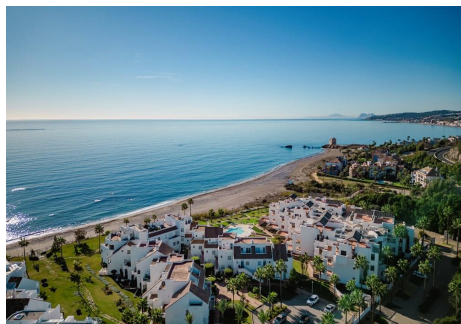
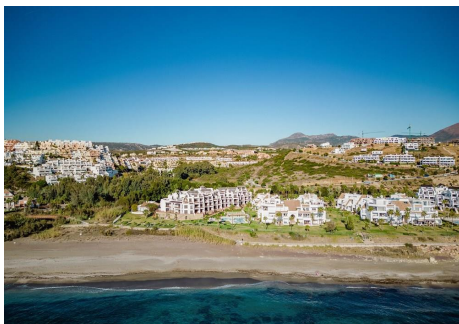
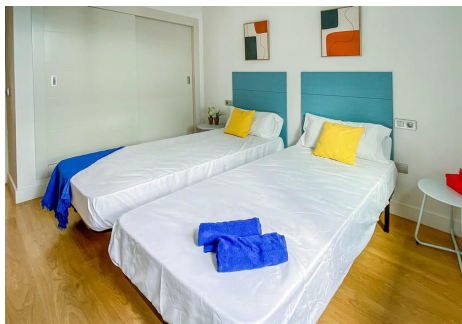
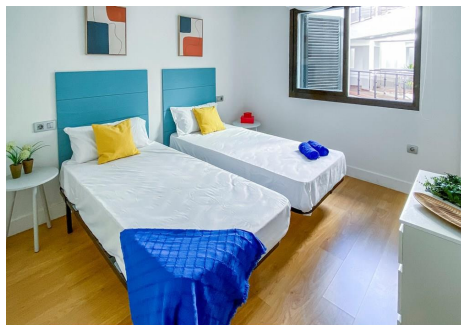
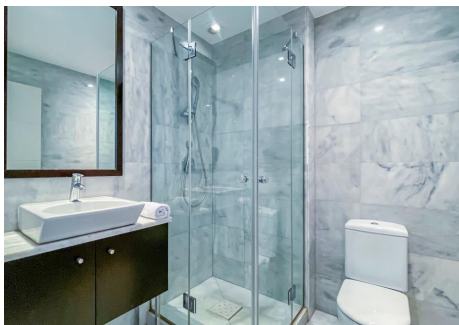


117 m<sup>2</sup>  
Built

Discover the seaside lifestyle in this charming 2-bedroom apartment with a spacious terrace. Located facing a beautiful beach with direct access to the sea and the scenic coastal path, this apartment offers a unique coastal living experience. Featuring two bedrooms with built-in closets, two spacious bathrooms, a living room, dining area, and a spectacular terrace where you can soak up the sun, enjoy the sea, and witness unforgettable sunsets. It also includes two parking spaces, a storage room, and comes fully furnished for you to enjoy from day one or to start generating rental income right away. Set on a tranquil beach with crystal-clear waters, this place is perfect for a relaxing vacation while still being close to golf courses, water sports, polo fields, restaurants, and all the amenities this area has to offer. Additionally, its peaceful location is within easy reach of charming villages like Casares or Manilva, as well as lively cities

like Estepona, Marbella, Sotogrande, and Gibraltar. If you haven't experienced this place yet, we invite you to come and see it. We would be delighted to show you our magnificent apartments and this privileged environment. Don't hesitate to call us now to arrange a viewing! FTN





CUADRO DE SUPERFICIES ÚTILES

HALL	6.90 M <sup>2</sup>
COCINA	7.00 M <sup>2</sup>
SALÓN-COMEDOR	26.90 M <sup>2</sup>
BANIO 1	3.70 M <sup>2</sup>
BANIO 2	6.10 M <sup>2</sup>
DORMITORIO 1	12.00 M <sup>2</sup>
DORMITORIO 2	16.00 M <sup>2</sup>
DISTRIBUIDOR	1.10 M <sup>2</sup>
TERRAZA	78.40 M <sup>2</sup>
TOTAL	157.00 M <sup>2</sup>

TERRAZA CUBIERTA

TERRAZA CUBIERTA	12.40 M <sup>2</sup>
PÉRGOLA TERRAZA	10.80 M <sup>2</sup>

SUPERFICIES CONSTRUIDAS

DORMITORIO	28.00 M <sup>2</sup>
BANIO 1	6.80 M <sup>2</sup>
BANIO 2	6.80 M <sup>2</sup>
TOTAL	117.60 M <sup>2</sup>