



SEMI-DETACHED HOUSE WITH 5 BEDROOMS

📍 Benalmadena

REF# R4690903 – 980.000€

IBI

1695 €/YEAR

Garbage

190 €/YEAR



5
Beds



5
Baths



289 m²
Built

Situated in one of the most prestigious areas in Torremuelle, this luxurious complex boasts premium quality residences. Offering outstanding community amenities including a gym, social areas, and a breathtaking

infinity pool overlooking the sea, this property epitomizes upscale coastal living.

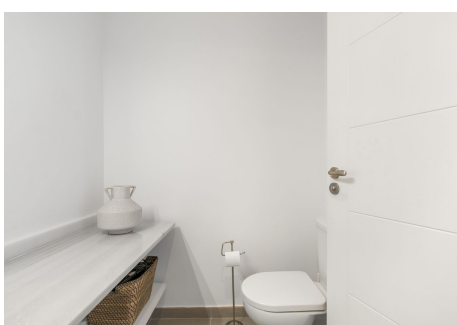
This private villa features its own exclusive pool, making it one of the most sought-after properties in the area. Spread across three levels, the main entrance from the street provides access to private parking and a charming outdoor entrance area. The first level hosts a double bedroom with a terrace, dressing room, and bathroom.

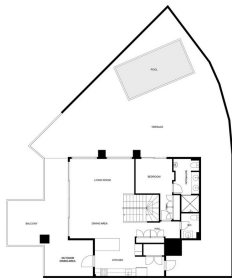
The main floor, accessible through a spectacular terrace, opens into a spacious living and dining area with exceptional outdoor spaces offering magnificent sea views. The lounge area seamlessly connects to the private pool, while the open-plan kitchen boasts its own terrace with an outdoor dining table. Additionally, there is a laundry area and ample terraces throughout the property for outdoor enjoyment.

With a total of four bedrooms, each with en-suite bathrooms, and a guest toilet, this villa offers ample space and comfort. A games room area, which can double as a second living area, completes the layout, offering versatility and entertainment options for residents.

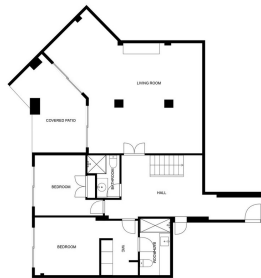
Experience the pinnacle of luxury living in this unique property nestled within the esteemed Torremuelle community.



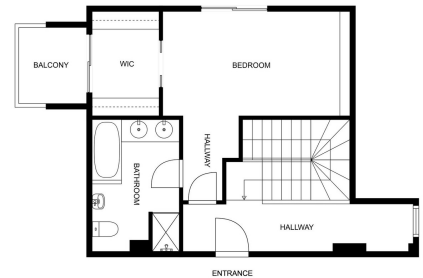




MÉTROS RESERVADOS SEGUN CATEGORIA TECNOLÓGICA. SE ASESORAN SIEMPRE CON LOS PLANOS DE CONSTRUCCIÓN.



MÉTROS RESERVADOS SEGUN CATEGORIA TECNOLÓGICA. SE ASESORAN SIEMPRE CON LOS PLANOS DE CONSTRUCCIÓN.



MÉTROS RESERVADOS SEGUN CATEGORIA TECNOLÓGICA. SE ASESORAN SIEMPRE CON LOS PLANOS DE CONSTRUCCIÓN.

