



VILLA MIT 4 SCHLAFZIMMER

📍 Benahavís

REF# R5135941 – 1.725.000€

Wohngeld

4392 €/JAHR



4

Schlafzimmer



4.5

Bäder



410 m²

Built



654 m²

Bauland

Set within the exclusive Atalaya Fairways community of Benahavís, this stunning contemporary villa offers a rare combination of elegance, privacy, and breathtaking views. With 4 spacious bedrooms, all featuring luxurious en-suite bathrooms, plus an additional guest toilet, this home is designed to deliver the ultimate in comfort and style. Spanning 410 m² of interior space on a generous 654 m² plot, the property blends modern architecture with functional living, creating the perfect sanctuary for family life or holiday escapes

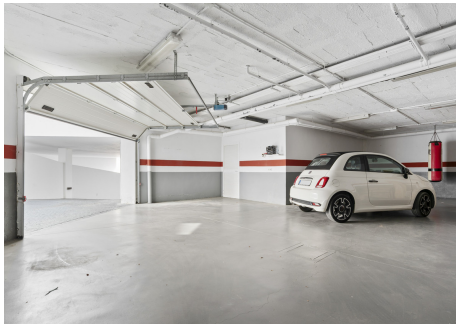
VILLA ONE Luxury Homes **T** | +34 687 83 44 03 **E** | info@villaone.es **W** | villaone.es

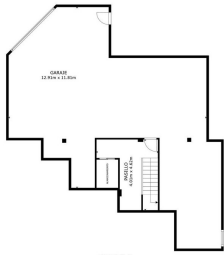
D | Avda. Ricardo Soriano, 72, Edif. Golden B, 1ª Planta, (29601) Marbella, Málaga, España.

The interior comes fully furnished, showcasing a sleek, fully fitted kitchen, a bright dining room, and an inviting living area. Floor-to-ceiling glass doors flood the home with natural light while framing panoramic vistas of the sea, mountains, golf course, and surrounding greenery. Enjoy unobstructed views stretching across the coastline, a spectacular setting for entertaining or sunset cocktails. The villa's private outdoor spaces are equally impressive, featuring a pristine swimming pool, landscaped garden, and both covered and uncovered terraces for year-round enjoyment. Practical luxuries such as fitted wardrobes, a lift, and a private garage ensure a lifestyle of convenience and sophistication. Located in a boutique development of just 16 uniquely designed residences, Atalaya Fairways is a peaceful, low-density enclave surrounded by the lush fairways of Atalaya Golf Course. Its privileged position offers the perfect balance: tranquil natural surroundings yet only minutes from golden beaches, vibrant dining spots, world-class leisure facilities, and the highly regarded Atalaya International School, making it an ideal choice for families seeking quality education close to home. This property is in excellent condition, offering a move-in-ready opportunity to own a slice of contemporary luxury in one of the Costa del Sol's most sought-after addresses.

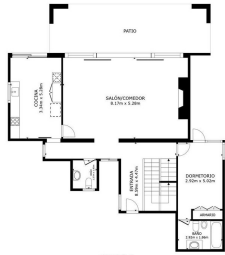




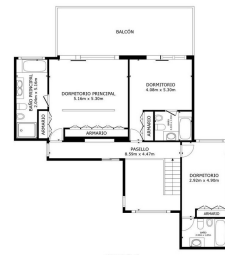




RESUMEN DE DATOS
PLANTA 1 (1º PLANTA)
ÁREA CONSTRUIDA: 100,00 m² (100,00 m²)
ÁREA ÚTIL: 100,00 m² (100,00 m²)
TOTAL: 100,00 m²
LOS TAMAÑOS Y LAS DISTRIBUCIONES SON INDICATIVAS Y PUEDEN VARIAR EN ALGUNOS DETALLES.



RESUMEN DE DATOS
PLANTA 2 (1º PLANTA)
ÁREA CONSTRUIDA: 100,00 m² (100,00 m²)
ÁREA ÚTIL: 100,00 m² (100,00 m²)
TOTAL: 100,00 m²
LOS TAMAÑOS Y LAS DISTRIBUCIONES SON INDICATIVAS Y PUEDEN VARIAR EN ALGUNOS DETALLES.



RESUMEN DE DATOS
PLANTA 3 (1º PLANTA)
ÁREA CONSTRUIDA: 100,00 m² (100,00 m²)
ÁREA ÚTIL: 100,00 m² (100,00 m²)
TOTAL: 100,00 m²
LOS TAMAÑOS Y LAS DISTRIBUCIONES SON INDICATIVAS Y PUEDEN VARIAR EN ALGUNOS DETALLES.

