



VILLA MIT 6 SCHLAFZIMMER

📍 Sierrezuela

REF# R4845535 – 895.000€

IBI

1676 €/JAHR

Müll

142 €/JAHR

Wohngeld

2508 €/JAHR



6

Schlafzimmer



3

Bäder



296 m²

Built



1058 m²

Bauland



46 m²

Terrace

****Important notice:**** The pool is currently under renovation and is expected to be completed within a month.

Discover this architect-designed villa, peacefully located in a scenic area with breathtaking panoramic views that stretch as far as the eye can see. When you arrive and park your car in the private area at the end of a

quiet cul-de-sac, you are greeted by an inviting 400 m² villa that exudes tranquillity, quality and relaxation, enriched with a number of unique details.

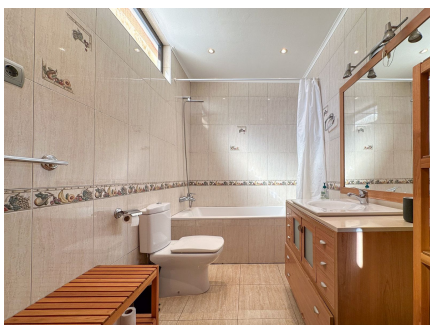
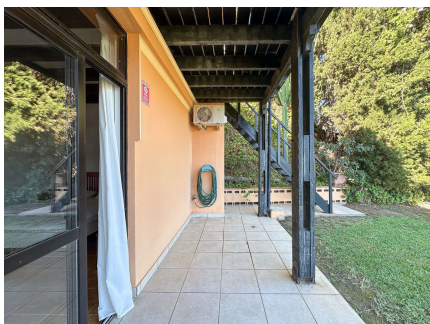
Upon entering the spacious entrance hall, you'll immediately notice the impressive ceiling height and the uniquely designed, moulded staircase that elegantly leads you up to the first floor, where the generous sense of space continues. The ground floor offers five well-proportioned bedrooms and two spacious bathrooms, as well as a lovely terrace with picturesque views.

When the villa was built, the ground floor was designed to be rented out as a bed-and-breakfast, making it an ideal choice for those who dream of starting such a business. The first floor offers a large suite with stunning views of the Mediterranean, adorned with exposed beams and an impressive 5 metre high ceiling that stretches to the ceiling. From the kitchen and heart of the house, you can enjoy views of Mijas Pueblo and the surrounding mountains and landscapes.

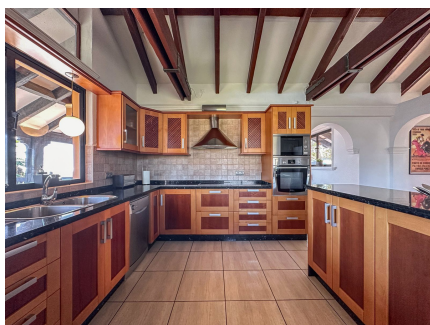
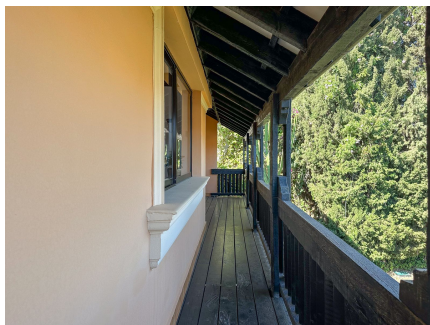
As you enter the living and dining area, you'll be greeted by the magnificent views that are peppered with unique details everywhere you look. The fireplace in the living room creates a cosy atmosphere on cooler evenings, and from the living room you have direct access to the inviting lounge area, where the pool, spa, barbecue and cosy corners invite you to many wonderful experiences.

The first floor also has a wrap-around terrace, so you can find your own personal sanctuary whether you want shade or full sun. This property represents a perfect combination of luxury, uniqueness and character, encouraging you to customise and personalise your home. Here you can create your dream home!











NOT TO SCALE
Ground floor



NOT TO SCALE
1st floor

