



PENTHOUSE MIT 2 SCHLAFZIMMER

📍 Nueva Andalucía

REF# R4835158 – 849.000€

IBI

1038 €/JAHR

Müll

185 €/JAHR

Wohngeld

5220 €/JAHR



2

Schlafzimmer



2

Bäder



172 m²

Built



29 m²

Terrace

Elegant apartment in Scandinavian style within walking distance to all amenities

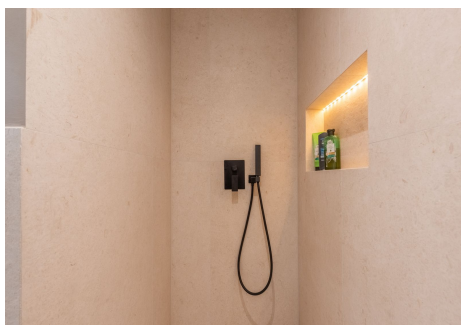
We are pleased to present this unique residence in the heart of Nueva Andalucía. It consists of two joined apartments and offers two bedrooms, one of which is a master bedroom, two bathrooms, a spacious living room and a stylish open-plan kitchen that leads out to a lovely terrace. There is plenty of room here for

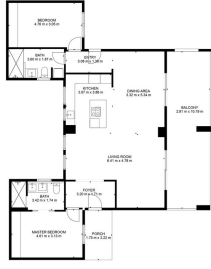
socializing and relaxing all year round!

The furniture can be purchased separately if desired.

The apartment is located in a sought-after urbanization in a very good location with proximity to everything. Just around the corner is the grocery store Super Banús and Marbella's Hard Rock Hotel. In a couple of minutes' walk you will reach the popular shopping center Centro Plaza. The sea and Puerto Banús can be reached in just 15 minutes' walk from the residence. For the golf lover, the Los Naranjos, Aloha, and Las Brisas courses are a short drive away. Other nearby facilities include Real Club Padel and the Swedish grocery store Miadel as well as Spisa.

This is the perfect choice for those who want to live within walking distance of all the best Marbella has to offer.





TOTAL 187 m²
TERRAZA 107 m²
BUILDED AREA 80.000 m², PARCHA 6 m²

Plano de referencia de carácter orientativo. Consultar siempre los planos de obra.