



## APARTMENT MITTELGESCHOSS MIT 4 SCHLAFZIMMER

📍 Málaga Este

**REF# R4447699 – 1.150.000€**



4

Schlafzimmer



4

Bäder



210 m<sup>2</sup>

Built



11 m<sup>2</sup>

Terrace

Exclusive luxury home on the beachfront that combines style, comfort and an enviable location. With 211 meters built, this residence redefines elegance and good taste.

Upon entering this property, you will be greeted by a light and airy feeling that will instantly captivate you. The thoughtfully designed 4 bedrooms and 4 bathrooms offer the perfect space to relax and unwind. Each of them has top quality finishes, ensuring a luxurious experience in every corner of the house.

Imagine waking up every morning and enjoying the spectacular views of the sea from the comfort of your

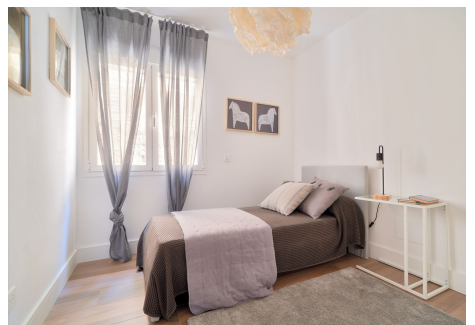
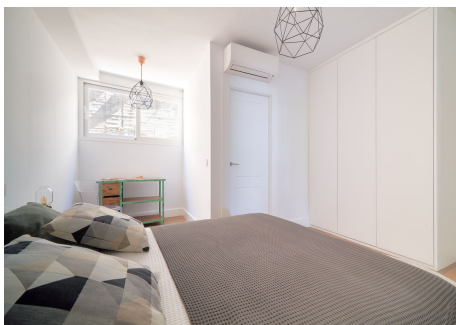
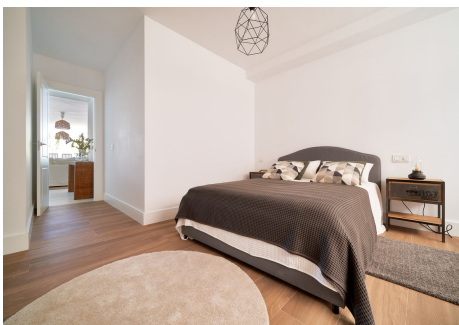
private terrace. This outdoor space will become your personal oasis, an idyllic place to enjoy the warm rays of the sun and the sea breezes. Here you can enjoy the tranquility of the surroundings and contemplate the changing colors of the Mediterranean.

In addition, this luxury home has practical additional spaces. A storage room, which gives you the opportunity to keep your belongings organized, and 2 parking spaces that guarantee the comfort and safety of your vehicle.

As for the kitchen, you will be surprised by its beauty and functionality. With impeccable design details and equipped with the best brands of appliances, you will be able to delight your guests with exquisite meals while enjoying an elegant dining area.

In every corner of this luxury home, top quality materials have been used, guaranteeing excellence in finishes and durability.

This exclusive property is located in a privileged setting in Malaga, where you will have direct access to a golden sand beach and crystal clear waters. In addition, you will be just minutes from the best restaurants, shops and entertainment venues in the area.







- TABLERÍA Y TECHOS**  
Tabiquería mediante muros autoportantes de placas de yeso laminado tipo Pladur.  
Pintura plástica a base de agua y techos.  
Combinación de techos quemados y de placas de escape en función de la estancia.
- SOLERÍA**  
Combinación de suelos porcelánicos con rodapiés de MDF en color blanco.
- CARPINTERÍA INTERIOR**  
Puertas abatibles y correderas de tablero MDF lisas y lacadas en blanco.  
Amueblado empotrado lacado en blanco con baldas móviles y bano de castaño.
- CARPINTERÍA EXTERIOR**  
Aluminio lacado en blanco con RPT.  
Acondicionamiento con sistema climat.  
Perfiles mecanizados y domesticados en dominios.
- BÁÑOS**  
Suelos y alcantarales de gres porcelánico. Los alcantarales serán una combinación de placas colocadas a distintas alturas dependiendo de la zona.  
Aparatos sanitarios de porcelana esmaltada RSCA equipados con grifería de la misma marca.  
Platos de ducha con mamparas.
- COCINA**  
La cocina estará completamente equipada con muebles de alta calidad, encimeras de Silestone, fregadero de acero inoxidable y grifo mezclador.  
Electrodomésticos integrados: campana extractora, placa, horno, nevera, lavavajillas, lavadora y frigorífico marca Whirlpool.
- CLIMA Y A.C.S.**  
Sistema de climatización multigratificado mediante WiFi.  
Agua caliente sanitaria mediante acumulador eléctrico. Encendido manual y domotico.  
Chimenea.
- ELECTRICIDAD Y TELECOMUNICACIONES**  
Instalación completa cumpliendo el Reglamento Electrotécnico de Baja Tensión.  
Toma de televisión en salón y R+D+V en dormitorios.  
Neuráximo SIMON 270 con circuitos domesticados, salón, terraza, cocina y dormitorio principal.

