



DVOJDOMEK 4 LOŽNICE

📍 San Pedro de Alcántara

REF# R5387671 – 1.395.000€

IBI

1989 €/YEAR

Community

4488 €/YEAR



4

Ložnice



6

Koupelny



256 m²

Built



374 m²

Plot



156 m²

Terrace

Located in the exclusive Treetops gated community in San Pedro de Alcántara, Marbella, this modern semi-detached villa offers privacy, comfort, and beautiful open views in a peaceful natural setting. Built in 2023, the property is within walking distance to San Pedro town, the beach, gyms, restaurants, and all everyday amenities, while also being close to golf courses and international schools.

VILLA ONE Luxury Homes **T** | +34 687 83 44 03 **E** | info@villaone.es **W** | villaone.es
D | Avda. Ricardo Soriano, 72, Edif. Golden B, 1ª Planta, (29601) Marbella, Málaga, España.

The villa features 4 bedrooms and 4 bathrooms, with approximately 256 m² built on a 374 m² plot. Its elevated position and west-facing orientation provide natural light throughout the day, along with stunning sunset views over the mountains and partial sea views.

Designed for easy indoor and outdoor living, the home offers a bright open-plan social kitchen and living area with a built-in wine cooler, creating the perfect space for families, entertaining guests, or enjoying holidays in Marbella. Spacious terraces and a private garden offer the possibility to build a private pool or jacuzzi, ideal for enjoying the Costa del Sol lifestyle all year round.

Additional features include underfloor heating, high-end interiors, new solar panels, quality finishes throughout, and two underground parking spaces with direct access to the property, including an electric car charging station.

Residents of Treetops enjoy excellent community facilities including swimming pools, a fully equipped gym, and social areas, all within a secure and peaceful environment.

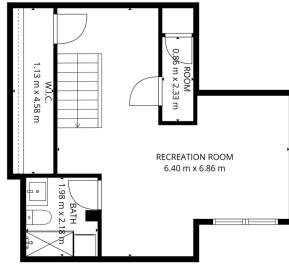
Only a short drive from Puerto Banús and renowned golf courses such as Guadalmina, this property is a fantastic opportunity to enjoy contemporary living in a prime Marbella location.







TOTAL 209 m²
Basement: 42 m², 1st Floor: 52 m², 2nd Floor: 81 m², 3rd Floor: 4 m²
EXCLUDED AREAS: BALCONY: 35 m², PATIO: 36 m², COVERED PATIO: 48 m²
ROOFTOP TERRACE: 78 m², WALLS: 18 m²



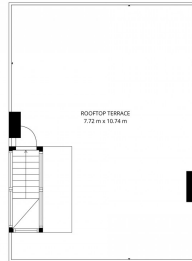
TOTAL 209 m²
Basement: 42 m², 1st Floor: 52 m², 2nd Floor: 81 m², 3rd Floor: 4 m²
EXCLUDED AREAS: BALCONY: 35 m², PATIO: 36 m², COVERED PATIO: 48 m²
ROOFTOP TERRACE: 78 m², WALLS: 18 m²



TOTAL 209 m²
Basement: 42 m², 1st Floor: 52 m², 2nd Floor: 81 m², 3rd Floor: 4 m²
EXCLUDED AREAS: BALCONY: 35 m², PATIO: 36 m², COVERED PATIO: 48 m²
ROOFTOP TERRACE: 78 m², WALLS: 18 m²



TOTAL 209 m²
Basement: 42 m², 1st Floor: 52 m², 2nd Floor: 81 m², 3rd Floor: 4 m²
EXCLUDED AREAS: BALCONY: 35 m², PATIO: 36 m², COVERED PATIO: 48 m²
ROOFTOP TERRACE: 78 m², WALLS: 18 m²



TOTAL 209 m²
Basement: 42 m², 1st Floor: 52 m², 2nd Floor: 81 m², 3rd Floor: 4 m²
EXCLUDED AREAS: BALCONY: 35 m², PATIO: 36 m², COVERED PATIO: 48 m²
ROOFTOP TERRACE: 78 m², WALLS: 18 m²