



SAMOSTATN? STOJÍCÍ VILA 4 LOŽNICE

📍 La Cala Golf

REF# R5318263 – 1.899.500€



4
Ložnice



4
Koupelny



463 m²
Built



1109 m²
Plot



74 m²
Terrace

This very rare and elegant 4-bedroom home, by the well-known, Marbella architect Jacobson/Gonzales is a perfect example of this architect's eye for details and light.

Its location gives a lot of privacy and stunning panoramic views over the golf course and mountains beyond. The big wow factor is when you enter the property and are met by panoramic views through a huge window. This is stunning!

To the left you have the kitchen and a big living room with lots of room for family and friends. Connected to this area you also have terraces with beautiful views.

One of them leads to the garden and a lovely pool area. To the right from the hallway, you have two good sized bedrooms and a laundry area.

VILLA ONE Luxury Homes **T** | +34 687 83 44 03 **E** | info@villaone.es **W** | villaone.es
D | Avda. Ricardo Soriano, 72, Edif. Golden B, 1^a Planta, (29601) Marbella, Málaga, España.

To go downstairs you go to the panoramic window and follow it down to the 2 bedrooms below. Here you also find the huge master bedroom with its own terrace.

Distances:

Colegio Alemán de Málaga / Deutsche Schule Málaga in La Mairena – 7 minutes by car

International school St. Anthony's College – 8 minutes by car

Carrefour, Aldi, Lidl and Mercadona in La Cala – 7 minutes by car

La Cala Golf Club – 300 m, walking distance

Marbella Center – 20 minutes by car

Elviria – 12 minutes by car

Fuengirola center – 20 minutes by car

La Cala Golf Resort offers:

Three 18-hole golf courses plus a driving range and a 9-hole course

Four restaurants

Spa with baths, sauna and treatments

Three padel courts

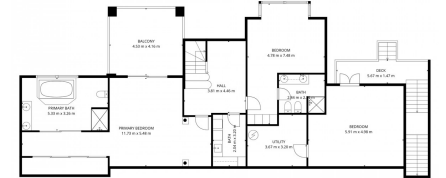
One tennis court

Gym

Fitness center with about 40 classes per week (in Spanish or English)







TOTAL 334 m²
 Plot area: 160 m², 1st floor: 156 m²
 EXCLUDED AREA: UTILITY: 10 m², DECK: 17 m², BALCONY: 38 m²
 OPEN TO BELOW: 11 m², TERRACE: 14 m², PAVED: 17 m²
 WALLS: 24 m²

TOTAL 334 m²
 Plot area: 160 m², 1st floor: 156 m²
 EXCLUDED AREA: UTILITY: 10 m², DECK: 17 m², BALCONY: 38 m²
 OPEN TO BELOW: 11 m², TERRACE: 14 m², PAVED: 17 m²
 WALLS: 24 m²

