



SAMOSTATN? STOJÍCÍ VILA 4 LOŽNICE

📍 Torremuelle

REF# R5154784 – 1.295.000€

Community

2640 €/YEAR



4
Ložnice



4
Koupelny



314 m²
Built

= A Modern Villa with Exceptional Views and Next-Level Comfort =

Welcome to a home that truly stands out – even in an area known for quality living.

This exclusive property in Torremuelle, Benalmádena isn't just spacious and well-designed it offers something truly rare:

Uninterrupted views, premium community features, and thoughtful upgrades that make daily life effortlessly smooth.

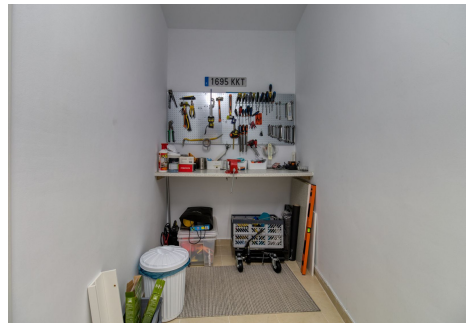
Highlights include:

- = 314 m² of modern living space across three levels – with the option to add a 5th bedroom
- = 4 bedrooms, 4 bathrooms, and 1 guest toilet
- = 2 living rooms with sea views and amazing natural light
- = The best view in the entire community – overlooking the sea and Fuengirola
- = Brand new 13 kW solar panel system + 11 kW battery pack – energy efficient and future-proof
- = Private garage and new exterior tiling throughout
- = Jacuzzi, outdoor shower, and covered outdoor kitchen
- = Infinity pool (open year-round), fully equipped gym, and co-working area
- = Exclusive clubhouse available for private events
- = Located right next to a peaceful olive-tree park
- = Just a 15-minute walk to Torremuelle train station
- = Just 20 minutes from the airport and close to charming Benalmádena Pueblo

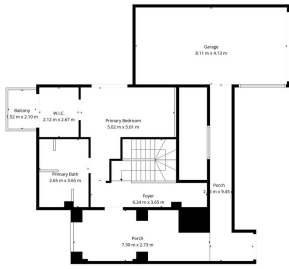
Its modern architecture, unbeatable views, and high-end features, this is more than a home. It's a place to thrive.



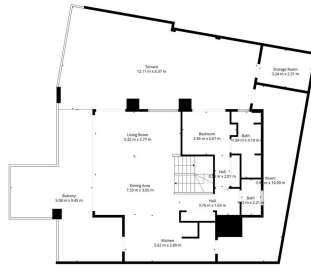




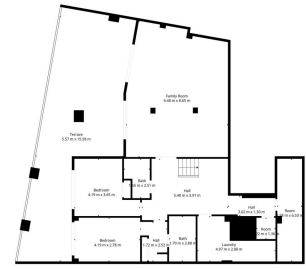




TOTAL: 392 m²
BELOW GRADE: 138 m² BELOW GRADE: 113 m², 1st Floor: 31 m²
EXCLUDED AREAS: TERRACE: 128 m², STORAGE ROOM: 7 m², BALCONY: 38 m²
POOR: 31 m² GARAGE: 34 m², WALLS: 22 m²



TOTAL: 392 m²
BELOW GRADE: 138 m² BELOW GRADE: 113 m², 1st Floor: 31 m²
EXCLUDED AREAS: TERRACE: 128 m², STORAGE ROOM: 7 m², BALCONY: 38 m²
POOR: 31 m² GARAGE: 34 m², WALLS: 22 m²



TOTAL: 392 m²
BELOW GRADE: 138 m² BELOW GRADE: 113 m², 1st Floor: 31 m²
EXCLUDED AREAS: TERRACE: 128 m², STORAGE ROOM: 7 m², BALCONY: 38 m²
POOR: 31 m² GARAGE: 34 m², WALLS: 22 m²



TOTAL: 392 m²
BELOW GRADE: 138 m² BELOW GRADE: 113 m², 1st Floor: 31 m²
EXCLUDED AREAS: TERRACE: 128 m², STORAGE ROOM: 7 m², BALCONY: 38 m²
POOR: 31 m² GARAGE: 34 m², WALLS: 22 m²