



M?STSKÝ D?M 5 LOŽNICE

📍 Artola

REF# R5072410 – 595.000€

IBI

1000 €/YEAR

Garbage

190 €/YEAR

Community

1524 €/YEAR



5

Ložnice



4

Koupelny



178 m²

Built



50 m²

Terrace

Opportunity! Prime location in the sought-after Artola Alta area, directly overlooking Cabopino Golf and only a 12-minute walk (approx. 900 meters) to the beautiful Cabopino's Beach and the Cabopino Marina.

This townhouse is ideal for families, golf lovers, or those seeking a high-end holiday home in one of Marbella's most tranquil and green areas, just steps from the beach.

Private Garage – With direct access to the property.

Peaceful Yet Connected – Quiet residential setting with easy access to the AP-7, international schools, public transport, and all amenities.

Artola Alta

Why choose the area?

You have a winning combination: sea, golf, nature and comfort in a premium location.

Perfect both for year-round living and exclusive holidays.

Authentic ambience without the urbanistic excesses of other areas of the Costa del Sol.

Cabopino Marina

Very close to Artola Alta, with approximately 169 moorings and a pleasant area with bars, restaurants and nautical activities.

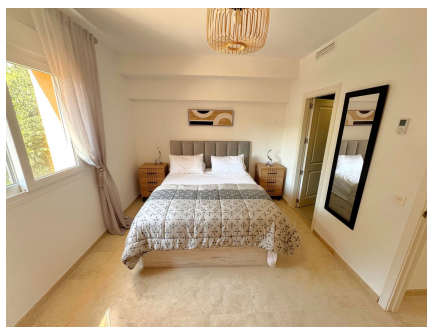
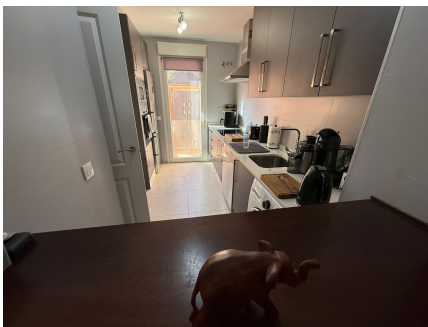
It offers a quiet and pleasant atmosphere, ideal both during the day and at sunset.

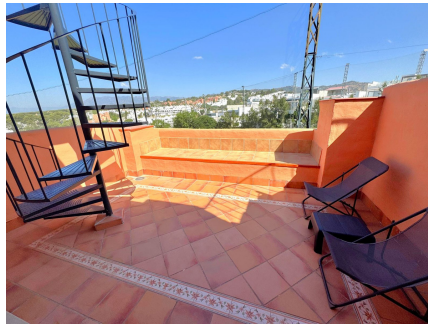
Cabopino Golf

18-hole golf club designed by Juan Ligués Creus, combining par-3, par-4 and par-5 with lakes, curious pine trees and spectacular views of the Mediterranean Sea.

The third hole is particularly celebrated: a par-4 from an elevated tee at a height of 80 m, protected by bunkers, with breathtaking views.

Located in Artola Alta, just a few minutes' walk from the beach and the port, it offers a well-kept environment and a welcoming clubhouse.







TOTAL 189 m²
 3 SUITES 11 m² 3. BAÑO 7 m² 3. SALÓN 38 m² 4. PASEO 8 m²
 ÁREAS EXCLUSIVAS GARAJE AJERADO 19 m² AZÚCAR COBERTO 17 m² BALCON 17 m²
 PISCINA 30 m² TERRAZA 19 m²



TOTAL 189 m²
 3 SUITES 11 m² 3. BAÑO 7 m² 3. SALÓN 38 m² 4. PASEO 8 m²
 ÁREAS EXCLUSIVAS GARAJE AJERADO 19 m² AZÚCAR COBERTO 17 m² BALCON 17 m²
 PISCINA 30 m² TERRAZA 19 m²



TOTAL 189 m²
 3 SUITES 11 m² 3. BAÑO 7 m² 3. SALÓN 38 m² 4. PASEO 8 m²
 ÁREAS EXCLUSIVAS GARAJE AJERADO 19 m² AZÚCAR COBERTO 17 m² BALCON 17 m²
 PISCINA 30 m² TERRAZA 19 m²



TOTAL 189 m²
 3 SUITES 11 m² 3. BAÑO 7 m² 3. SALÓN 38 m² 4. PASEO 8 m²
 ÁREAS EXCLUSIVAS GARAJE AJERADO 19 m² AZÚCAR COBERTO 17 m² BALCON 17 m²
 PISCINA 30 m² TERRAZA 19 m²



TOTAL 189 m²
 3 SUITES 11 m² 3. BAÑO 7 m² 3. SALÓN 38 m² 4. PASEO 8 m²
 ÁREAS EXCLUSIVAS GARAJE AJERADO 19 m² AZÚCAR COBERTO 17 m² BALCON 17 m²
 PISCINA 30 m² TERRAZA 19 m²