

FINCA - CORTIJO 6 LOŽNICE

📍 Coín

REF# R4864324 – 695.000€



6

Ložnice



4

Koupelny



331 m²

Built



2238 m²

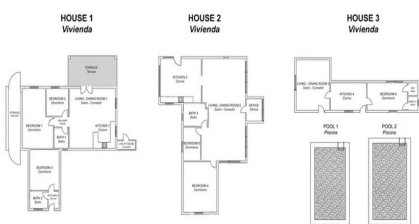
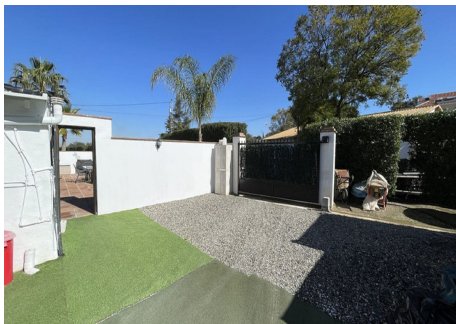
Plot

Nestled amidst tranquility and picturesque surroundings, this exceptional property boasts three distinct residences harmoniously coexisting on a single, meticulously landscaped plot. Providing an unparalleled canvas for diverse lifestyles and astute investments, this fully registered property offers peace of mind with its AFO certification.

****House 1: Three Bedrooms**** Designed for families and entertaining enthusiasts, this residence features three bedrooms, including an attached studio bedroom for added space. Two thoughtfully positioned bathrooms enhance convenience and luxury. The open-plan kitchen and living area, graced with air conditioning, create an inviting ambiance for gatherings. Outside, a refreshing pool, dedicated parking, and separate access complete this family sanctuary.

****House 2: Two Bedrooms**** Embracing coziness and charm, this residence offers two bedrooms and a well-designed bathroom, making it ideal for families, couples, or as a profitable rental unit. The modern kitchen, illuminated by spotlights, flows effortlessly into the open-plan living-dining room that extends to a serene terrace. Enjoy the warmth of central heating, the refreshing solar-heated pool, and the convenience of parking, electric gates, a Jacuzzi, and a barbecue area, all enhancing the appeal of this charming retreat.

****House 3: One Bedroom**** Simplicity meets comfort in this one-bedroom gem, perfect for individuals or couples seeking a cozy yet uncomplicated lifestyle. The well-appointed bathroom, parking, and separate access ensure privacy and convenience. Ideal for rental income or as an additional living space, this unit offers a versatile solution within this exceptional property. Embrace the versatility and tranquility of this extraordinary property, an investment that promises both comfort and financial rewards. Welcome to your new home!



This is a representation of the layout of the property and it is not to scale.
Esta es una representación de la distribución de la propiedad y no está a escala.

