



SAMOSTATN? STOJÍCÍ VILA 10 LOŽNICE

📍 The Golden Mile

REF# R4783900 – 3.200.000€

IBI

3400 €/YEAR

Garbage

180 €/YEAR

Community

12480 €/YEAR



10

Ložnice



7

Koupelny



470 m²

Built



122 m²

Plot



110 m²

Terrace

Live your best life in Marbella's Golden Mile

Just 100 meters from the world-famous Marbella Club Hotel and 400 meters from the beach, this independent Villa is situated in the heart of Marbella's luxurious Golden Mile. Step outside your door to

indulge in the opulence of Puente Romano's Michelin-star restaurants, world-class tennis courts, and Marbella's sandy beaches.

Marbella's most renowned Michelin-starred seafood restaurant is just 50 meters away, with other Dani García establishments within walking distance. The villa is also conveniently located within a five-minute drive of Puerto Banus and Marbella's Old Town.

Nestled in a small community with expansive grounds, this 8 bedroom + 2 bonus rooms, plus a self contained suite, Villa features a double-length swimming pool, a paddle court, and stunning views of both the sea to the south and La Concha mountain to the north. Inside, you'll find marble floors, central air conditioning and heating, a high bar, and a terrace perfect for entertaining guests.

The property includes four underground parking spaces and two storage rooms. Golf enthusiasts will appreciate being within a ten-minute drive of three of Costa del Sol's best golf clubs: Aloha, Las Brisas, and Los Naranjos. Additionally, the British International School of Marbella is just four minutes away.

Please note, these are two side by side semi-detached homes, can be converted into a single detached villa (work undertaken by the seller) please watch both video tours:

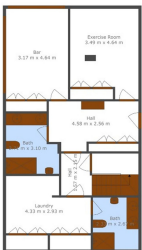












TOTAL: 168 m²
 MÍNIMO CONSTRUCCIÓN: 81 m² (100% del 81 m² de licencia a 10 m²)
 OBLIGACIÓN MÍNIMO CONSTRUCCIÓN: 102 m² (125% licencia a 81 m²)
 MÍNIMO CONSTRUCCIÓN: 102 m²



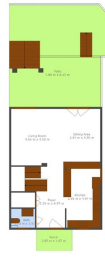
TOTAL: 168 m²
 MÍNIMO CONSTRUCCIÓN: 81 m² (100% del 81 m² de licencia a 10 m²)
 OBLIGACIÓN MÍNIMO CONSTRUCCIÓN: 102 m² (125% licencia a 81 m²)
 MÍNIMO CONSTRUCCIÓN: 102 m²



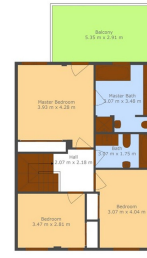
TOTAL: 168 m²
 MÍNIMO CONSTRUCCIÓN: 81 m² (100% del 81 m² de licencia a 10 m²)
 OBLIGACIÓN MÍNIMO CONSTRUCCIÓN: 102 m² (125% licencia a 81 m²)
 MÍNIMO CONSTRUCCIÓN: 102 m²



TOTAL 228 m²
Area Covered: 242 m² (2587 sq. ft.)
Area of Plot: 228 m² (2477 sq. ft.)
INCLUDED AREA: 228 m² (2477 sq. ft.)
EXCLUDED AREA: 14 m² (151 sq. ft.)



TOTAL 228 m²
Area Covered: 242 m² (2587 sq. ft.)
Area of Plot: 228 m² (2477 sq. ft.)
INCLUDED AREA: 228 m² (2477 sq. ft.)
EXCLUDED AREA: 14 m² (151 sq. ft.)



TOTAL 228 m²
Area Covered: 242 m² (2587 sq. ft.)
Area of Plot: 228 m² (2477 sq. ft.)
INCLUDED AREA: 228 m² (2477 sq. ft.)
EXCLUDED AREA: 14 m² (151 sq. ft.)