

M?STSKÝ D?M 3 LOŽNICE

📍 Puerto Banús

REF# R4781017 – 650.000€

IBI

1240 €/YEAR

Garbage

184 €/YEAR

Community

2040 €/YEAR



3

Ložnice



2

Koupelny



140 m²

Built



18 m²

Terrace

Welcome to this corner townhouse in Azalea Beach with an unbeatable location on the beachside between Puerto Banús and San Pedro de Alcántara!

This cozy townhouse offers 3 bedrooms, 2 bathrooms and a guest toilet.

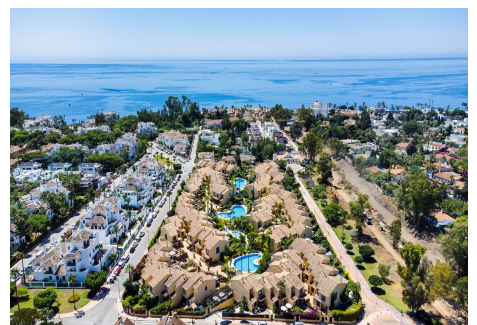
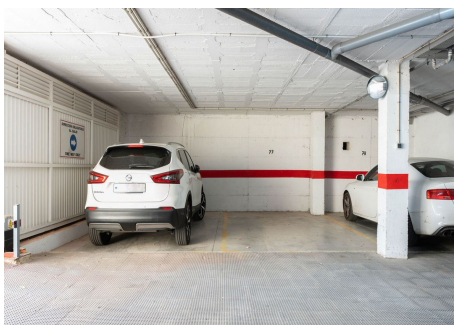
By the entrance to the property you have a spacious private terrace, perfect for a chill out area with evening sun. As you enter the property, on the entrance level you will find a guest toilet, kitchen, living and dining room. From the living room you have access to the back terrace and garden area.

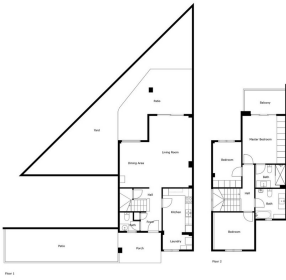
On the upper level you will find 3 bedroom and 2 bathrooms. The master bedroom has an en-suite bathroom and a small terrace.

The urbanization has beautiful gardens and 5 swimming pools.
Garage included in the price.

Welcome!







Measurements Calculated on Overall Height, Not on Net Clearances