



SAMOSTATN? STOJÍCÍ VILA 3 LOŽNICE

📍 Benalmadena

REF# R4365799 – 1.495.000€



3
Ložnice



3
Koupelny



243 m²
Built



602 m²
Plot



55 m²
Terrace

Well-Located and Stylish Villa with Sea View in Benalmadena

This exclusive villa is located in Benalmadena, a coastal town in the southern region of Andalusia, Costa del Sol. The villa is situated on a picturesque hilltop part of Benalmadena, offering breathtaking views of the Mediterranean Sea. It is considered among the best places to buy villa in Benalmadena. It is a cosmopolitan town that is known for its stunning beaches and numerous tourist attractions.

The villa has an excellent location close to all amenities. The villa is 1,9 km from the beach, 5,9 km from Torrequebrada golf course, 21 km from Malaga International Airport, and 38 km from Marbella.

To enjoy the outdoors, the villa has a private garden, that seamlessly blends with its surroundings and has

a private pool. The idyllic location offers stunning sea views and tranquil living space close to all amenities. The villa has an open-plan kitchen with well-equipped modern appliances and high-quality fixtures, a stylish and functional open-planned living and dining area, and 3 spacious bedrooms with en-suite bathrooms and large windows to enjoy amazing sea views. The open floor plan and strategically positioned floor-to-ceiling windows allow natural light to flood the space and take full advantage of the scenic vistas of the Mediterranean Sea.

Interior

- Air Conditioning
- Balcony
- Blinds
- En-Suite Bathroom
- Laundry Room
- Open-Plan Kitchen
- Shower
- Storage Room
- Terrace
- White Goods

Exterior

- Car Park
- Private Garden
- Private Pool

Location

- Airport (0-50 Km)
- Beach (1-5 Km)
- Sea (1-5 Km)
- Sea View
- Mountain View

Heating

- Air Conditioning



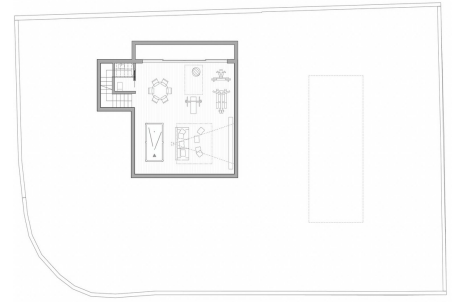
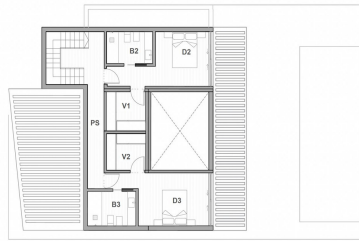
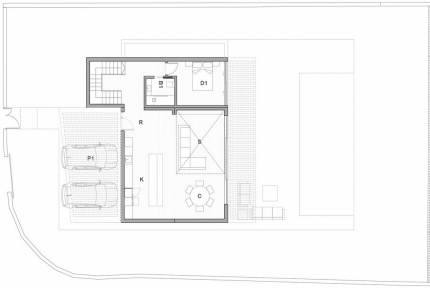


TABLA DE SUPERFICIES ÚTILES			TABLA DE SUPERFICIES ÚTILES			TABLA DE SUPERFICIES ÚTILES			TABLA DE SUPERFICIES CONSTRUIDAS		
PLANTA PB			PLANTA P1			SOTANO			VIVIENDA PB		
Receptor	5,07	m ²	Comedor 1	14,02	m ²	Salón de recepción	50,33	m ²	VIVIENDA P1	84,59	m ²
Cocina	23,48	m ²	Wc 1	4,87	m ²	Asc.	2,1	m ²	SOTANO	86,51	m ²
Comedor	11,5	m ²	Wc 2	5,7	m ²				PORCHES	47,42	m ²
Salón	83,2	m ²	Comedor 2	14,52	m ²				TOTAL SUPERFICIE CONSTRUIDA	399,79	m²
Comedor 1	17,47	m ²	Wc 2	4,8	m ²						
Bañ 1	3,88	m ²	Wc 3	5,1	m ²						
			Porch	8,57	m ²						
VIVIENDA PB	71,21	m ²	VIVIENDA P1	59,95	m ²	SOTANO	57,95	m ²			
PORCHE 1	23,48	m ²									
PORCHE 2	3,1	m ²									
PORCHES	58,44	m ²									
TOTAL SUPERFICIE ÚTIL											243,26